

TUFF-EDGE II®

Tuff-Edge II Polyester Webbing

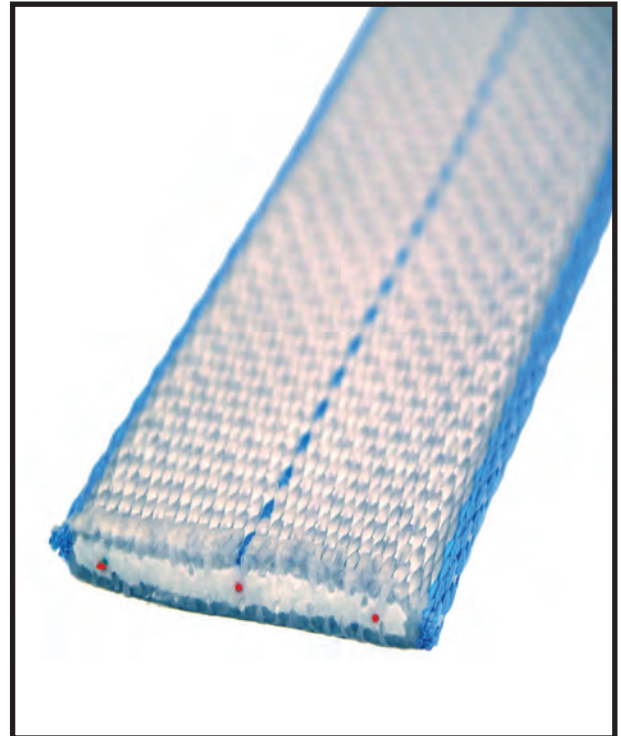
2X Stronger After Abrasion 2X Better Edge Cut Resistance

You can expect longer sling life and lower overall costs when you switch to **Tuff-Edge II**. Resistance to abrasion and edge cutting is greatly improved over nylon and polyester webbing.

Using Federal Test Method 191A, **Tuff-Edge II** webbing was tested against standard yellow polyester webbing. After being subjected to the same number of hex bar abrasion cycles, the **Tuff-Edge II** treated webbing, achieved average break strengths that were twice that of the standard yellow webbing!

In a test developed to measure edge cutting properties, the cut depth on the **Tuff-Edge II** webbing with special polymer edge yarns cut less than half the depth of the standard yellow polyester.

Although you should **always** pad and protect synthetic slings from load edges, normal wear and tear will be greatly reduced when using **Tuff-Edge II**, giving you longer sling life, reducing your overall costs.



Web
Slings

Features and Benefits

Promotes Safety

- Red Core yarn warning system aids in the inspection process.
- **Tuff-Tag** provides serial numbered identification for traceability.
- Special polymer coated edge yarns reduce edge cutting and abrasion.

Saves Money

- Web treatment fights abrasion for additional sling life.
- **Tuff-Tag** provides required OSHA information for the life of the sling.

Saves Time

- Easy identification; silver body, blue edges, and blue center stripe.

Always protect synthetic slings from being cut or damaged by corners, edges and protrusions using protection sufficient for each application.

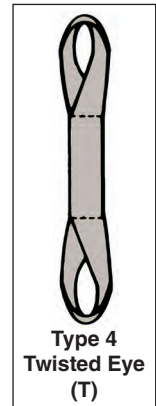
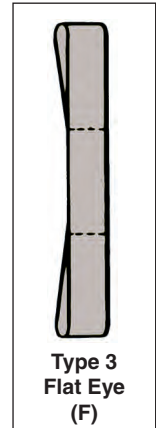


Refer to Sling Protection section in this catalog.

TUFF-EDGE AND WEBMASTER 1600 POLYESTER SLINGS

Web Slings

Eye and Eye Slings						
	Tuff-Edge II Part No.**	Web Width (in.)	Rated Capacity* (lbs.)			Webmaster 1600 Part No.***
			Vertical	Choker	V. Basket	
One Ply	EE1801TF	1	1,600	1,280	3,200	EE1801DF
	EE1802TF	2	3,200	2,500	6,400	EE1802DF
	EE1803TF	3	4,800	3,800	9,600	EE1803DF
	EE1804TF	4	6,400	5,000	12,800	EE1804DF
	EE1806TF	6	9,600	7,700	19,200	EE1806DF
	EE1808TF	8	12,800	10,200	25,600	EE1808DF
	EE1810TF	10	16,000	12,800	32,000	EE1810DF
	EE1812TF	12	19,200	15,400	38,400	EE1812DF
Two Ply	EE2801TF	1	3,200	2,500	6,400	EE2801DF
	EE2802TF	2	6,400	5,000	12,800	EE2802DF
	EE2803TF	3	8,800	7,040	17,600	EE2803DF
	EE2804TF	4	11,500	9,200	23,000	EE2804DF
	EE2806TF	6	16,500	13,200	33,000	EE2806DF
	EE2808TF	8	19,200	15,400	38,400	EE2808DF
	EE2810TF	10	22,400	17,900	44,800	EE2810DF
	EE2812TF	12	26,900	21,500	53,800	EE2812DF
Three Ply	EE3801TF	1	4,100	3,300	8,200	EE3801DF
	EE3802TF	2	8,300	6,600	16,600	EE3802DF
	EE3803TF	3	12,500	10,000	25,000	EE3803DF
	EE3804TF	4	16,000	12,800	32,000	EE3804DF
	EE3806TF	6	23,000	18,400	46,000	EE3806DF
	EE3808TF	8	30,700	24,500	61,400	EE3808DF
	EE3810TF	10	36,800	29,400	73,600	EE3810DF
	EE3812TF	12	44,000	35,200	88,000	EE3812DF
Four Ply	EE4801TF	1	5,000	4,000	10,000	EE4801DF
	EE4802TF	2	10,000	8,000	20,000	EE4802DF
	EE4803TF	3	14,900	11,900	29,800	EE4803DF
	EE4804TF	4	19,800	15,800	39,600	EE4804DF
	EE4806TF	6	29,800	23,800	59,600	EE4806DF
	EE4808TF	8	39,700	31,700	79,400	EE4808DF
	EE4810TF	10	49,600	39,600	99,200	EE4810DF
	EE4812TF	12	59,500	47,600	119,000	EE4812DF



** Replace the "F" with a "T" for Twisted Eyes.

*** Replace the "D" with an "N" to order nylon.

Eyes on Type 3 and Type 4 slings are tapered at 3" and wider, unless otherwise specified.

Eye Length - Applies to all Web Slings								
Plies of Web	Sling Width (in.)							
	1	2	3	4	6	8	10	12
1	8.5	10	11	12	16	20	24	24
2	8.5	10	11	12	16	20	24	24
3	10.0	12	14	16	18	24	24	24
4	10.0	12	14	16	18	24	24	24

*



Do not exceed rated capacities. Sling tension increases as the angle from horizontal decreases. Slings should not be used at angles of less than 30°. Refer to the Effect of Angle chart in the HELP section.